

# **DIRECT TREATER** DUAL



## **Official User Manual**

# **Table of Contents**

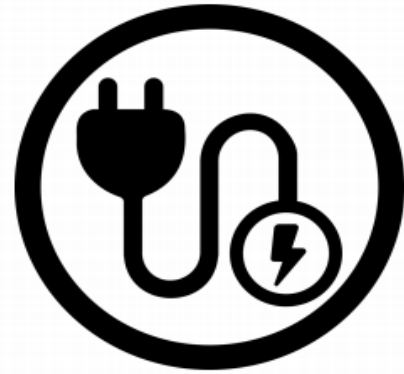
<b>What's Included.....</b>	<b>Page 1</b>
<b>Direct Treater Dual Specification.....</b>	<b>Page 2</b>
<b>Direct Treater Dual Installation.....</b>	<b>Page 3- 4</b>
<b>Direct Treater Dual Operation.....</b>	<b>Page 5</b>
<b>Direct Treater Dual Setting Functions.....</b>	<b>Page 6</b>
<b>Direct Treater Dual Sub Menu Functions.....</b>	<b>Page 7-9</b>
<b>Anatomy of a Direct Treater Dual.....</b>	<b>Pages 10-12</b>
<b>Before You Plug In Your Machine!.....</b>	<b>Page 13</b>
<b>Setting Up Your Direct Treater Dual.....</b>	<b>Pages 14-18</b>
<b>Direct Treater Dual Shut Down Procedure.....</b>	<b>Pages 19-23</b>
<b>Replacing Nozzle Into Spraying Mechanism.....</b>	<b>Pages 24-25</b>
<b>Official Settings Guidelines.....</b>	<b>Page 26</b>

# What's Included In The Direct Treater Dual Pretreatment Machine Package:

---



**[1] Direct Treater Dual Pretreatment Machine**



**[1] Controller Power Supply**



**[1] Drain Tube**



**[1] Pedal**

# Direct Treater Dual Specifications

Single V-nozzle type

Speed: 150~180 sheets / hour

Cleaning amount: 20Sec – 150ml

Size (Unit: mm)

Close: 1004.44(L) X 522.10(W) X 934.64(H)

Open: 1733.55 (L) X 522.10(W) X 1041.4(H)

Power (Free-voltage)

AC100-220V~ (50/60Hz)

Working: 50W

Stand by: 17W

Weight: 70kg

2 Bottles for Pre-treatment liquid

1 Bottle for cleaning liquid (water)

1 Bottle for waste liquid



# Direct Treater Dual Installation



1. Positioning
  - Install on Flat and rigid area
  - Check opened size in Specification page
  - Connect Power cable



2. Pour Pre-treatment liquid to Bottle1 or Bottle2  
From left two bottles for Pretreatment liquid. And, third one is for Cleaner.  
And, last one is for waste liquid  
Fill Liquid



3. Just select one liquid and then, you can use this pre-treatment machine  
Select Liquid

# How To Install The Pedal Switch



1. Plug male connector into female connector on the Pretreater



2. Screw in plastic piece on male connector to lock the connector assembly



3. Push in plastic and rubber pieces for complete install



# Direct Treater Dual Operation



1. Emergency stop button. It is using It is using for emergency situation. When this button push, all electric power will be stop. For re-start, just turn this button clock wise.

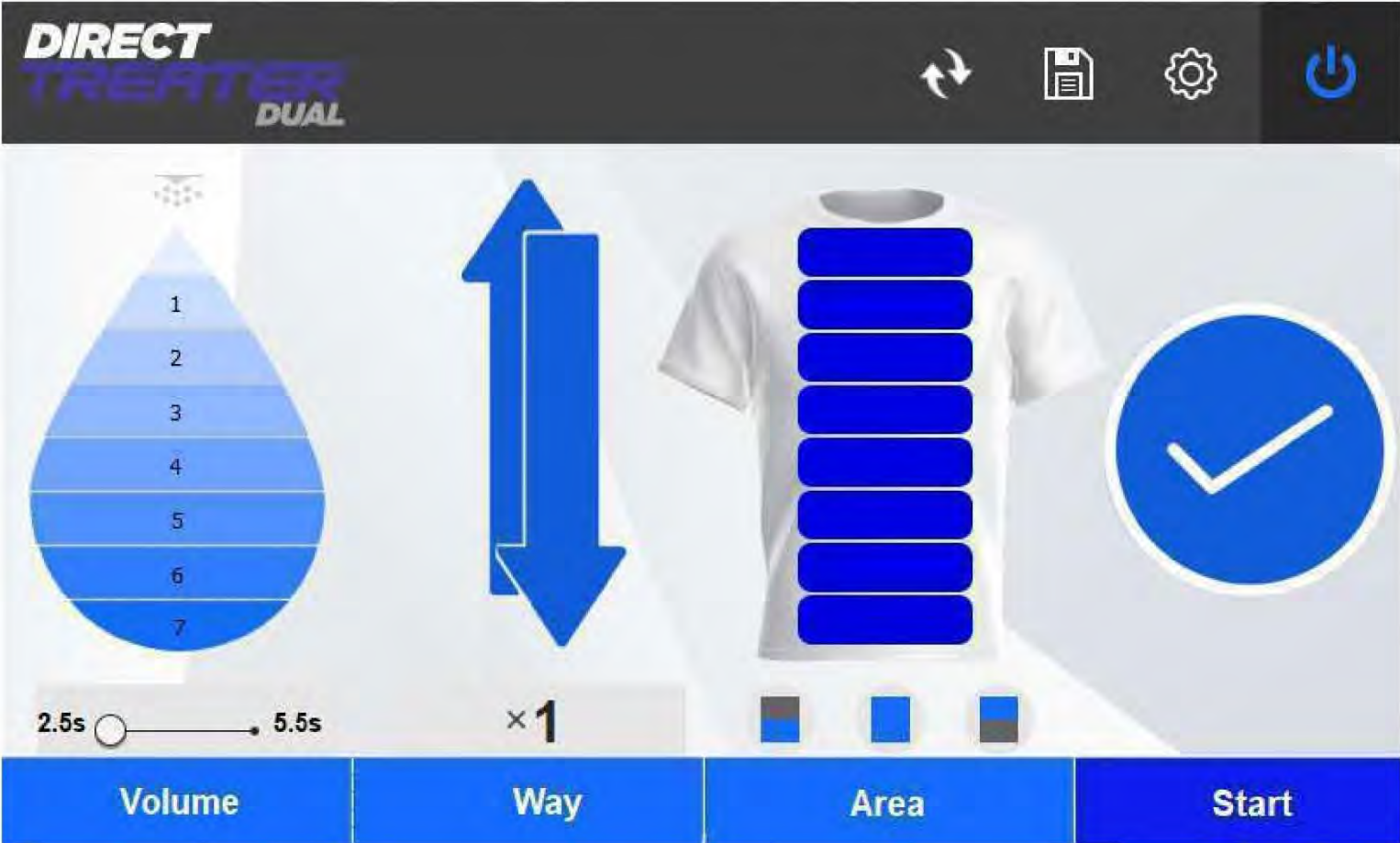
CAUTION After turn it clock wise, electrical power will come back. So, you should check all things before Re-start



2. For **machine's Power on / off**, you should use this switch which is beside of Waste bottle

In case of power off, you should close UI in touch screen for **machine's stable system**

# Direct Treater Dual Setting Functions



## Volume

Controls the amount of pretreatment liquid that is output during each spray. In addition, the timing of the spray can be adjusted as applicable to achieve the desired results.

## Way

Controls the direction as well as how many times a garment will be sprayed with pretreatment liquid. Adjust as needed for thicker or larger garments.

## Area

Controls the spray area of the pretreatment liquid. Adjust as needed for smaller garments or smaller print areas to save on pretreatment costs.

## Start

Initiates the pretreatment spraying process.



# Direct Treater Dual Sub Menu Functions



**Tray Sensor:** When the table tray is closed, it will not display. (If you don't want to use this sensor, you need touch this icon. That time, this icon will be change. For use again, just it need touch again).

---

**Position Reset:** If user move the nozzle assembly by hand, machine lost nozzle assembly's position. This case, for check start position, it need to touch "Reset".

---

**Save:** You can save and open your spray environment.

---

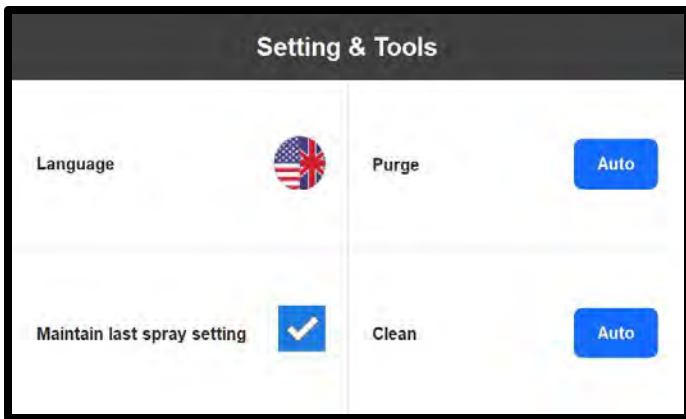
**Setting:** You can set language, purge and clean mode.

---

**Power:** When you touch power button, you will see "Power Off" menu. From here, there are two selection. If you select "Off", this touch screen will be off. Then, you need just switch off. If you need nozzle cleaning option, you can select "Clean & off".

In case of "Clean & off" it will showing valve check window first. Then, you can click "OK", it will work to clean mode. After cleaning (it will take 20 sec.) Touch screen will be off automatically.

During cleaning, if you push "stop" button, it will come back to "Power Off" menu.



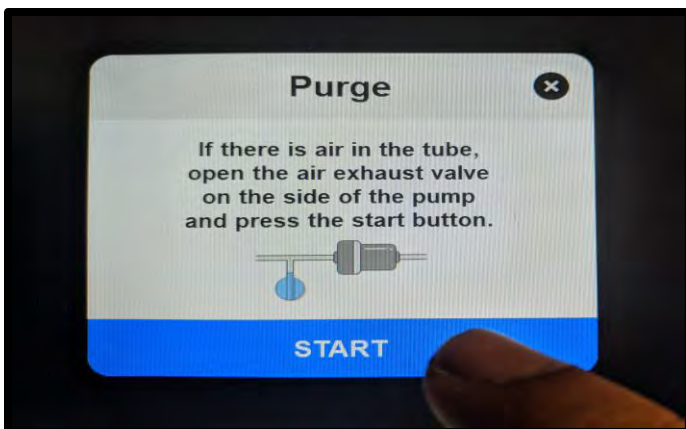
Settings functions:

-Language: You can select Language



-Purge: This function is for filling Pre-treatment liquid in the nozzle, after cleaning with cleaner.

Open the Top cover, and then, check the Valve.



Open the exhaust Valve. (Vertical way is open) Then, **touch the "Purge"**. This time, pump will work 2 sec. and air will be out from pump and tubes

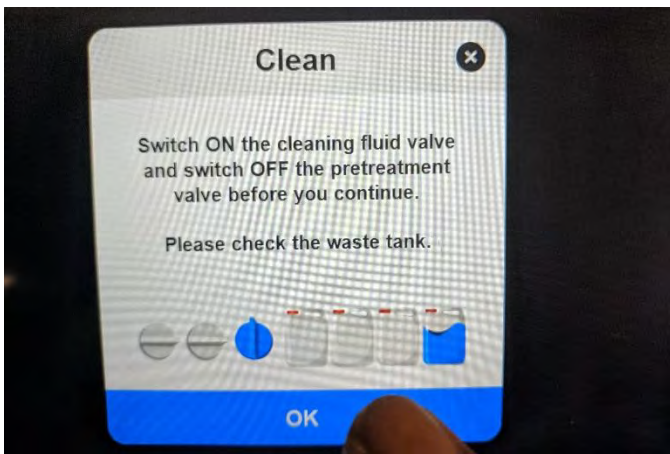


Step2: Close exhaust valve. Then, push start button. This time, pump will work for 2 sec. and liquid will be fill until nozzle.

## -Clean

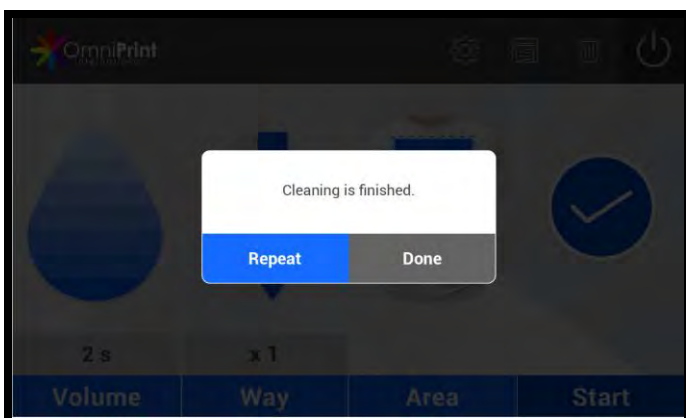
It is for clean the nozzle by cleaner(Water). Normally, this kind of pre-treatment liquid can make block the nozzle during not using period(more than 12 hours). For protect this problem, we suggest to use this clean function.

When you push cleaning button, you will see first Cleaning window as Right image. This window gives a checking message for the Valve control and waste tank



During cleaning, touch screen will be display left image.

This cleaning time will be take 20 sec. But, if you want to stop **cleaning, just touch "Stop"** in the UI. Then, will be stop directly.



After cleaning, message will be display as right picture.

If you want clean again, you **need touch "Repeat"**, if you want finish it, just touch **"Done"**.

# Anatomy of a Direct Treater Dual Pretreatment Machine

Fig 1- Front View of Direct Treater dual Pretreatment Machine

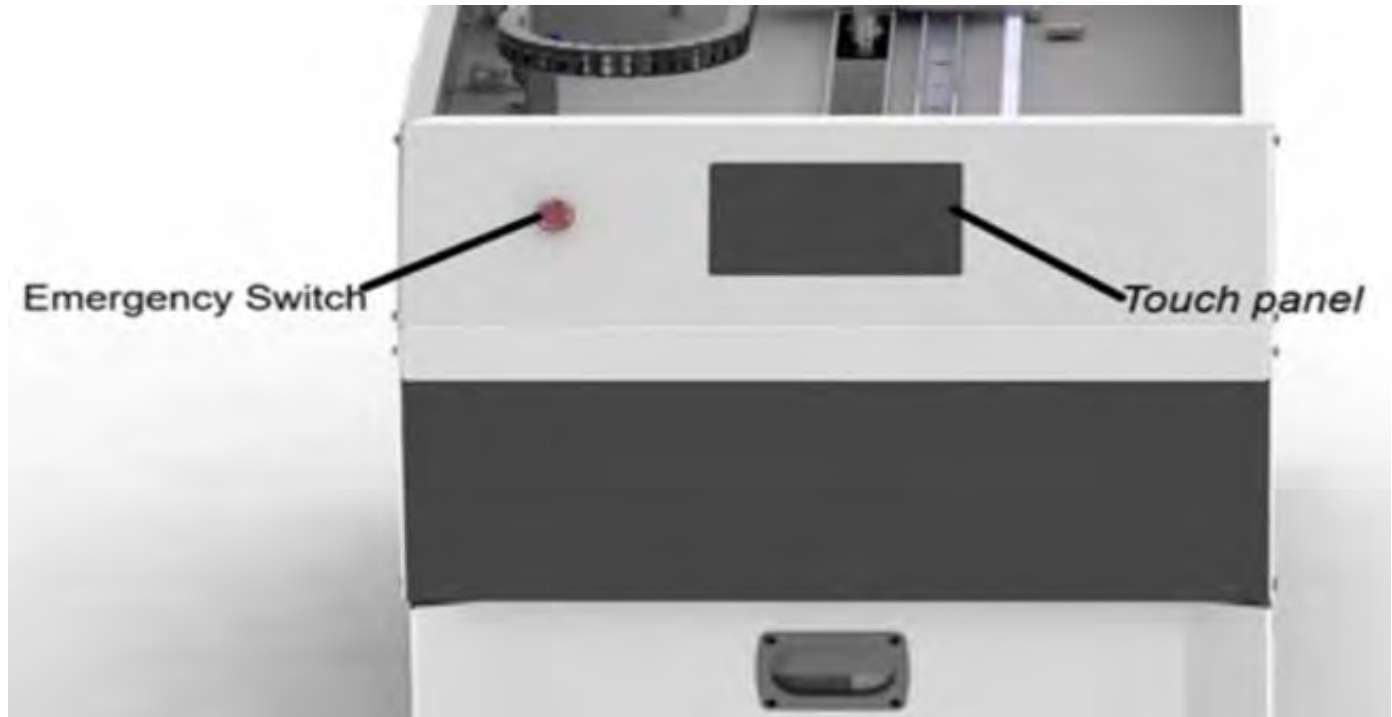
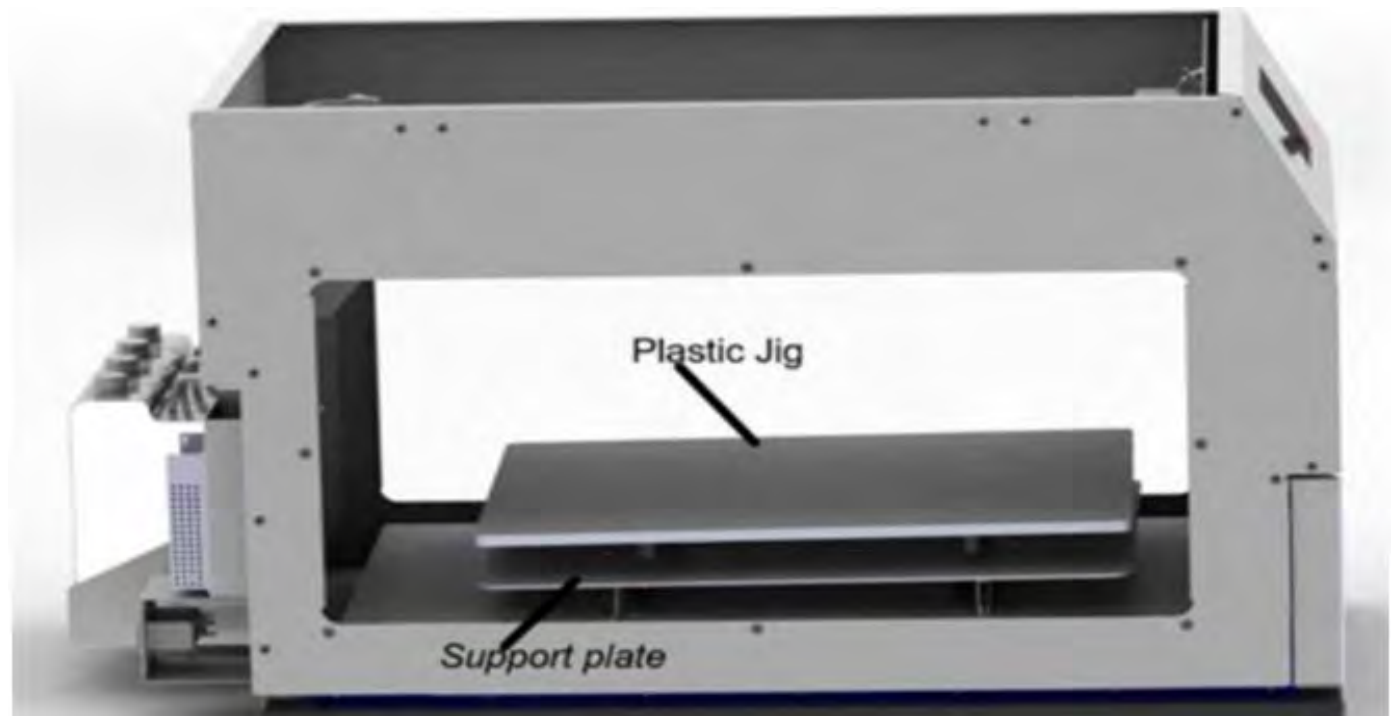
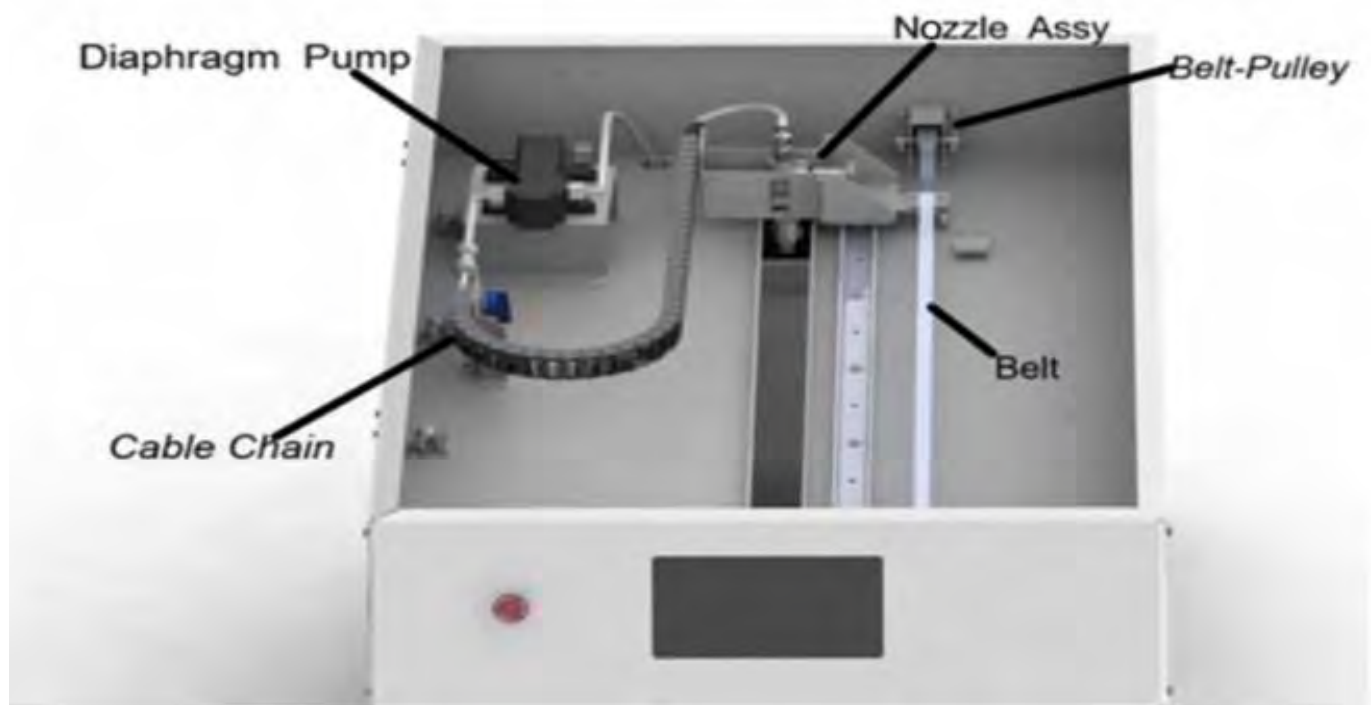


Fig 2- Side View of Direct Treater dual Pretreatment Machine



# Anatomy of a Direct Treater Dual Pretreatment Machine (Cont'd)

Fig.3- Under Top Hood



Stepping Motor



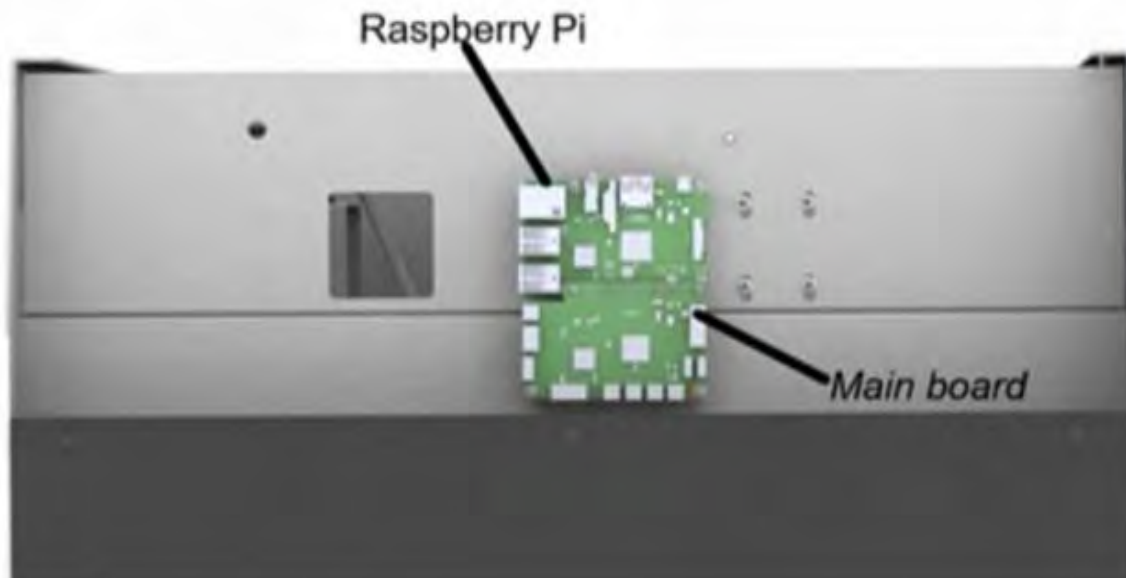


# Anatomy of a Direct Treater Dual Pretreatment Machine (Cont'd)

Fig.4- Back view of Direct Treater Dual Pretreatment Machine.



Fig.5- Electronic components of Direct Treater Dual Pretreatment Machine.





# Before You Plug-In Your Machine!

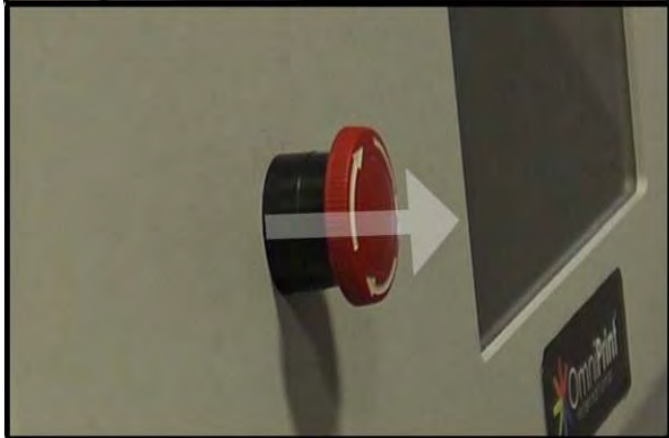
---



1. Locate the emergency switch at the front of the pretreatment machine. This is the small red circle with white arrows on it



2. Twist the emergency switch in a clock wise motion (as shown by arrows) and lightly pull to release it from the factory transit lock. The emergency switch should lightly pop out forward. This enables the function of the emergency switch which is to cancel sprays abruptly in case of emergencies.



# Setting Up Your Direct Treater Dual

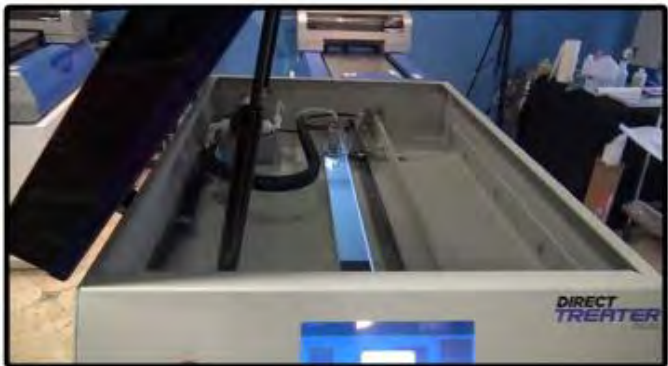


1. With the back power switch at the OFF position, plug your power cable into the back of the pretreatment machine.

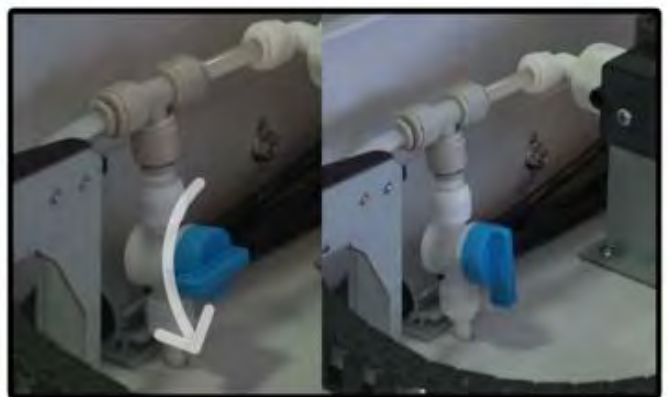
Be sure to plug into a surge protector!



2. Flip the back power switch into the ON position. The **machine's LED trim lights** should instantly light up and the machine should now be powering on.



3. As the machine is powering on, you will hear a beep and whirring sound as the nozzle lightly moves back and forth.



4. Under the top hood and next to the pump is a blue valve facing horizontally.

Rotate this valve counter-clockwise to face downwards.

# Setting Up Your Direct Treater Dual

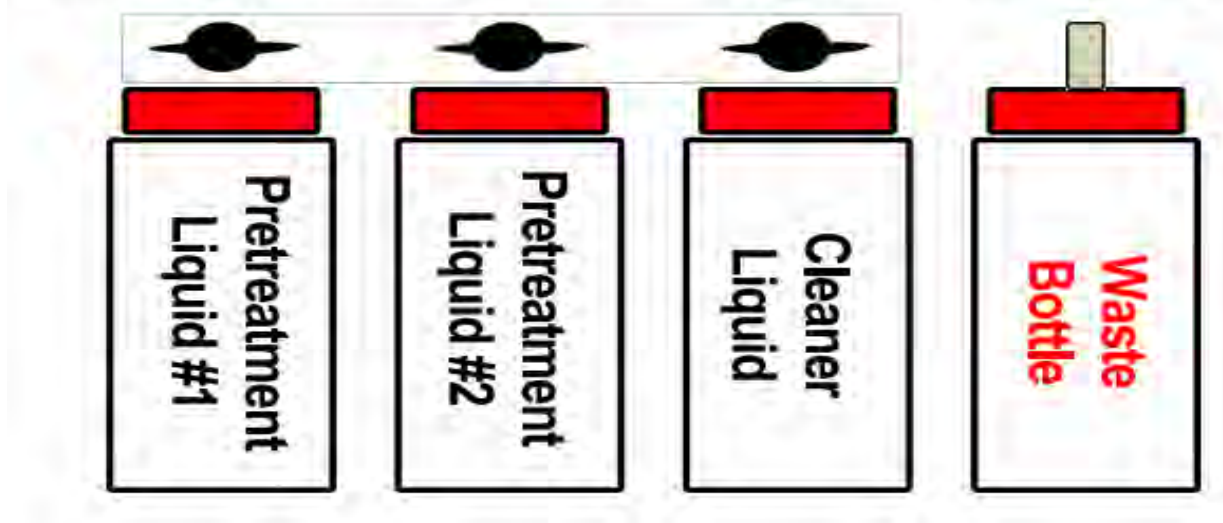


5. Go to the back of the printer where your pretreatment, cleaner and waste reservoirs are. All knobs should be horizontal to signify they are all closed off



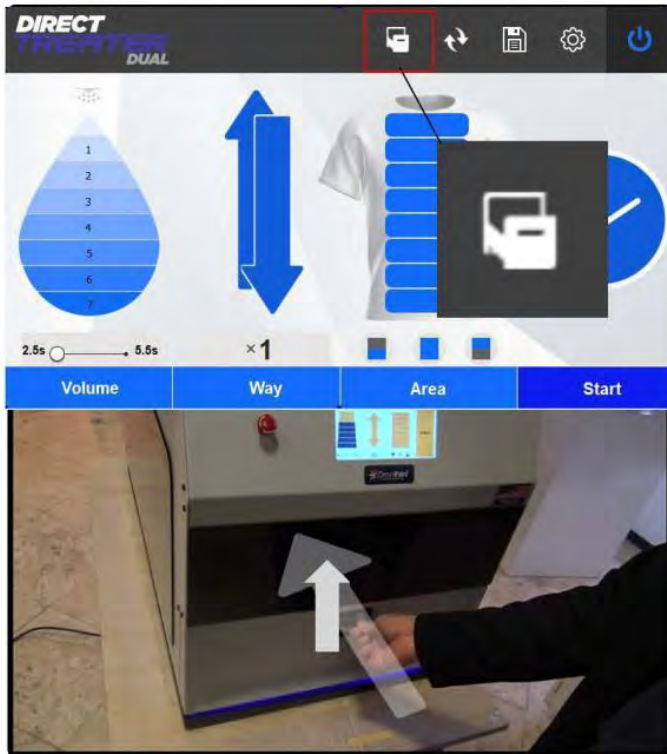
6. Open the far left knob to point vertically. Then fill the far left reservoir bottle with a pretreatment liquid of your choice.

## Correct Reservoir Bottle Assignment (Left To Right)





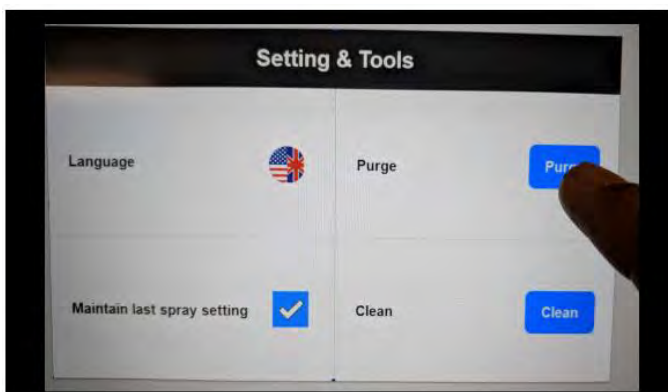
# Setting Up Your Direct Treater Dual



7. Before purging liquid into your machine for the first time, make sure the drawer is completely closed. If it is not closed, a drawer icon will appear on the top of the screen and it will not allow you to run any processes with the machine. When the drawer is properly closed, the drawer icon will disappear.



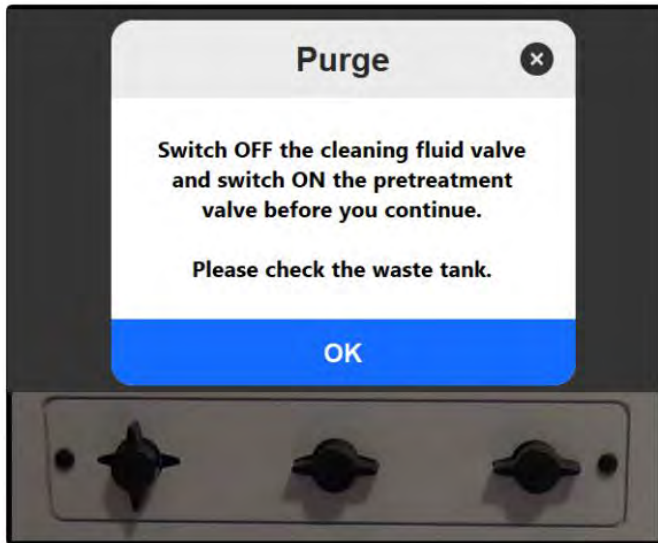
8. Tap on the gear icon on the top right corner of your touch screen to open your "Settings & tools" menu.



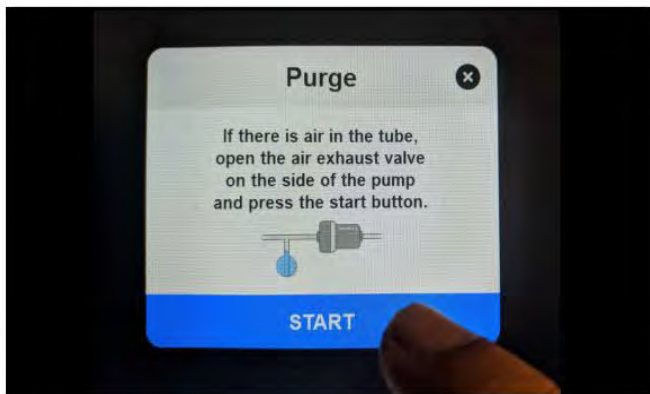
9. Next, tap on the "purge" option to get started on the process for purging liquid into the pretreatment machine and throughout the lines.



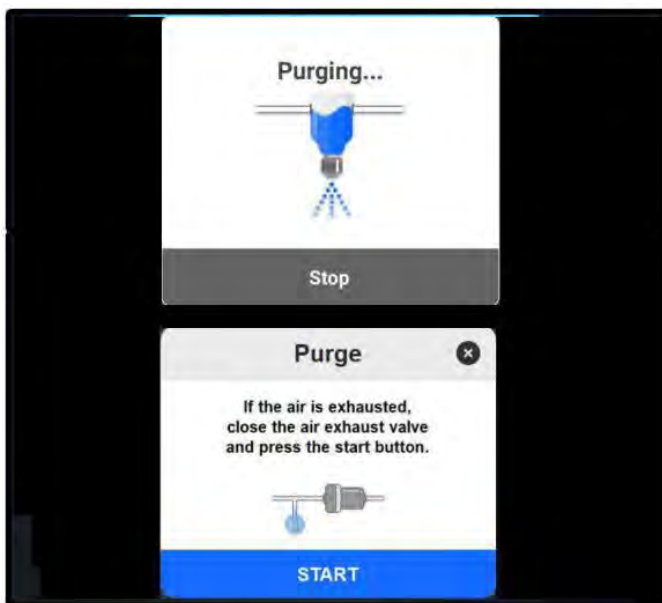
# Setting Up Your Direct Treater Dual



10. A pop-up will prompt you to switch off the cleaning fluid valve and switch on the desired pretreatment fluid valve before continuing with the purge. The far left valve should be opened and the other two valves should still be closed. Tap "OK".



11. The next window will advise you to open the blue air exhaust valve on the side of the pump. Since we have already done this, tap "Start" to begin the purging process.



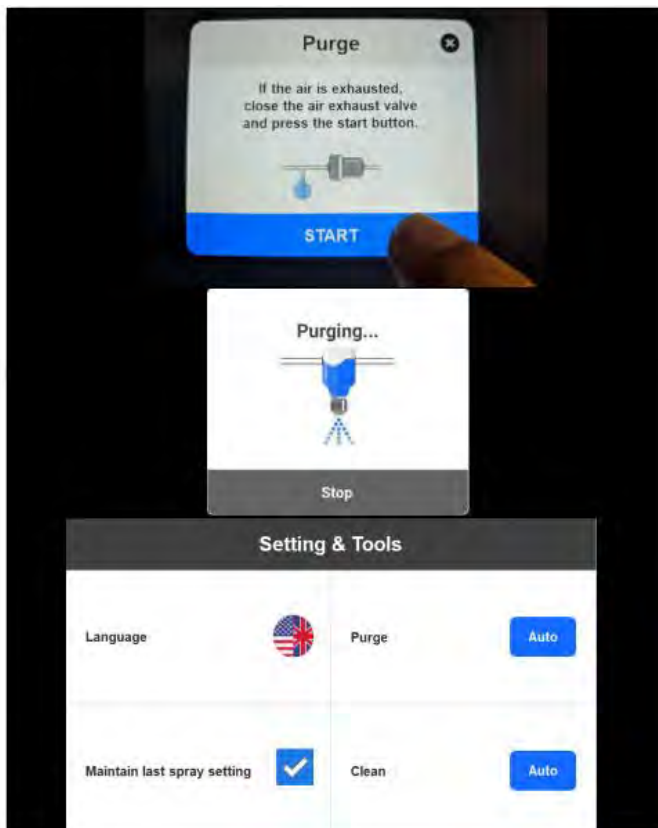
12. As the machine purges pretreatment liquid through the system, you will see a "purging..." loading window as shown to the left. It will stop then prompt you to close the blue air exhaust valve before continuing.

# Setting Up Your Direct Treater Dual



13. Close the blue air exhaust valve. It should now be facing horizontally. Think of this as an air pressure buildup/ release valve.

The line going from the reservoir bottle up to the pump should now be filled solid white with pretreatment liquid.



14. Next, tap "Start" to finish purging pretreatment liquid throughout the machine.

The "purging..." process window will reappear.

After it is finished, you will hear two consecutive beeps and the touch screen will return to the "settings & Tools" menu. The machine is now primed and ready to use.

# Direct Treater Dual Shut Down Procedure



Before getting started with the shut down procedure for the Direct Treater Dual, make sure the knobs for the first two left pretreatment reservoir bottles are shut and open the nob for the cleaner reservoir bottle as shown in the image above.

This is done in order to cut off the pretreatment lines so that only cleaner may be pumped throughout the machine while purging out remaining pretreatment liquid.

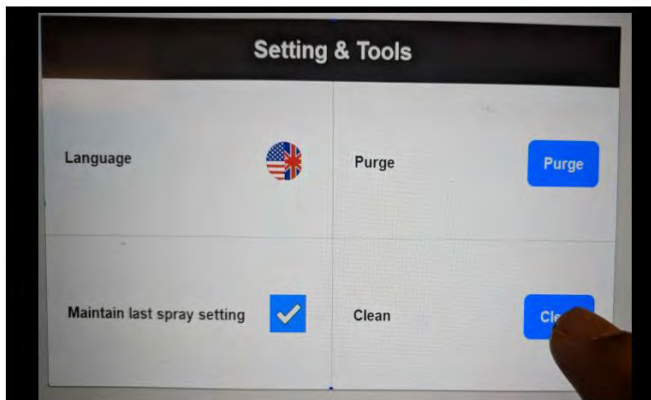
In addition, make sure the cleaner reservoir bottle is filled at least  $\frac{3}{4}$  so that there is a sufficient amount that can be purged throughout the system.



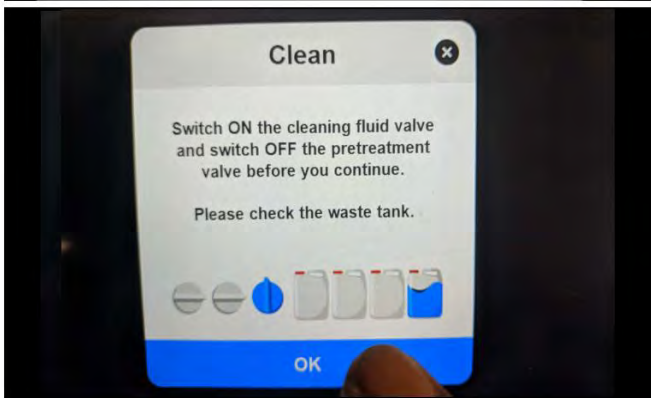
# Direct Treater Dual Shut Down Procedure



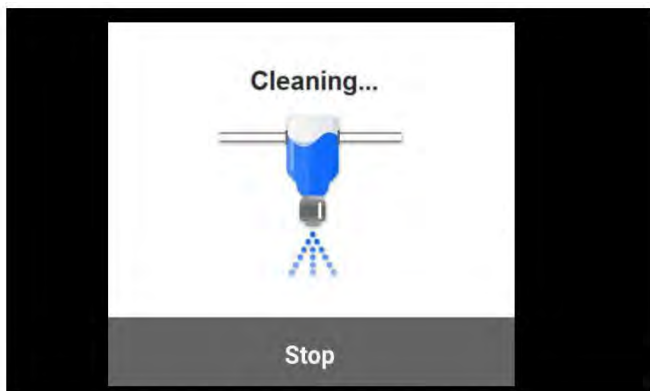
1. Tap on the gear icon on the top right corner of your touch screen to open your "Settings & Tools" menu.



2. Tap on the "Clean" option get started with the cleaning process.



3. You will be prompted with a pop-up window to make sure you close the pretreatment valves and open the cleaner valves and open the cleaner valve before continuing. Tap "OK" to initialize the cleaning



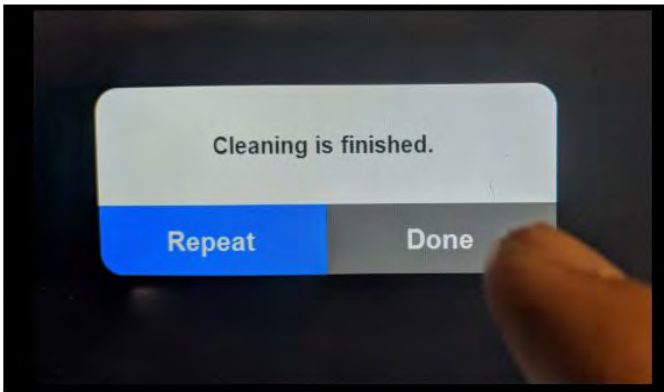
4. A "Cleaning..." loading window will appear while the machine runs through the cleaning procedure.



# Direct Treater Dual Shut Down Procedure



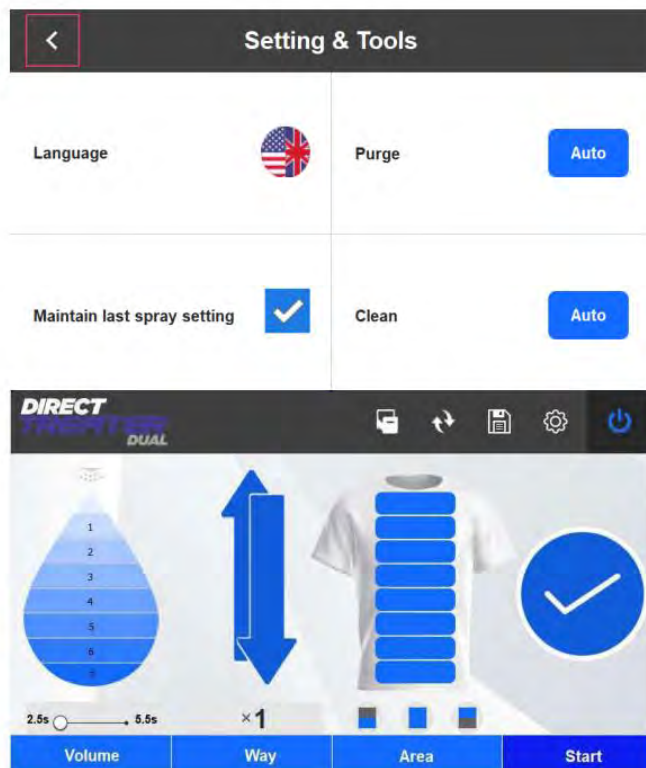
5. Check the tubes near the pump beneath the top hood. The lines should appear clear when the cleaning process finishes.



6. When the cleaning process is finished, you will see a pop-up window that with two options: "Repeat" and "Done".

If the lines by the pump are now cleared, tap "done".

Tap "Repeat" only if another cleaning process is needed.



7. When you tap "Done" you will be returned to the "settings & Tools" menu screen. Tap the arrow at the top left of the screen to be returned to the "Home" screen.

Next, you will need to remove the nozzle from the spraying mechanism to preserve it.



# Direct Treater Dual Shut Down Procedure



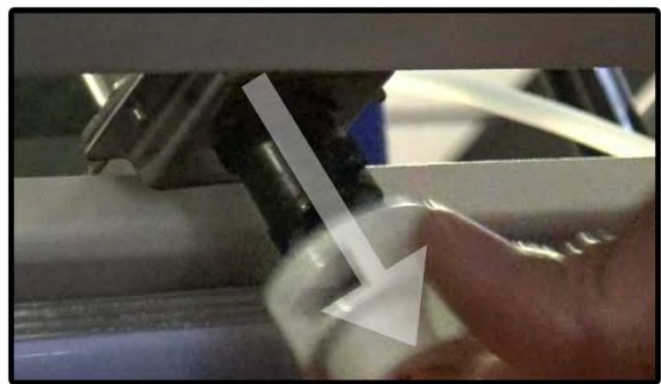
8. Before removing the nozzle, carefully move the spraying mechanism to the center of the track.



9. Remove the side window so that you may access the nozzle and properly remove it.

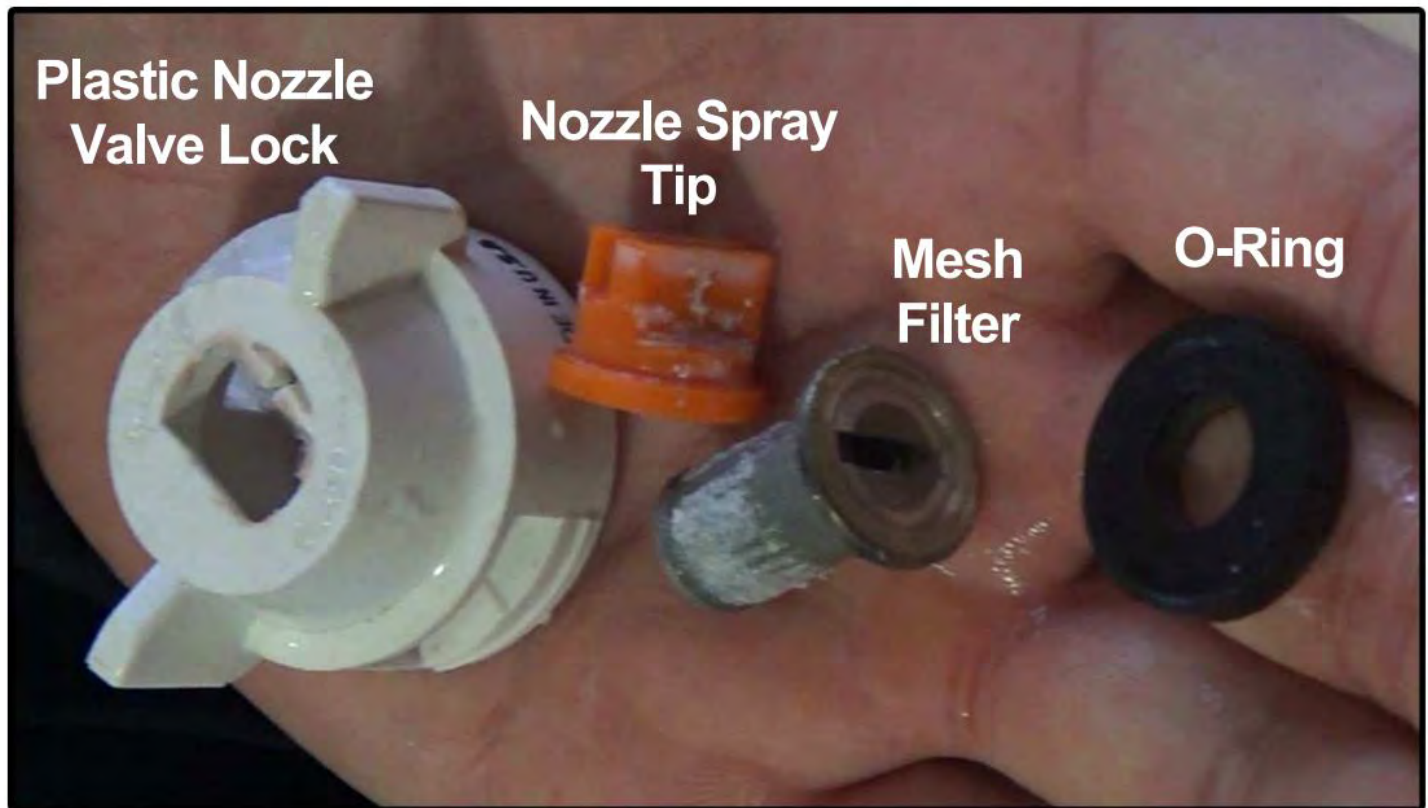


10. To properly remove the nozzle, rotate the outer white plastic valve lock counter-clockwise to release the nozzle assembly components.



11. Lightly pull down to remove the nozzle assembly and its components.

# Direct Treater Dual Shut Down Procedure.



Upon removal, these are the parts that should be in your hand.

12. To preserve these parts, they must be left soaking overnight in cleaner liquid to loosen up waste and old pretreatment residue that can ultimately affect the functionality of these parts.



13. Now that you've cleaned the system and removed the nozzle to soak, you may shut off the machine by switching the back switch to the "Off" position. (Circle symbol)

# Replacing Nozzle into Spraying Mechanism



1. Before replacing the nozzle components, take the outer white plastic valve lock and face it down (shown left) as it normally does within the machine.



2. Take the nozzle tip and carefully insert into the white plastic valve lock with the tip facing down as well. (Shown left).



3. Make sure the nozzle tip is completely inserted and is snug with the opening for the tip. (Shown left).



4. Insert the black rubber O-ring directly over the nozzle and lay it flat on top of the nozzle tip.



# Replacing Nozzle into Spraying Mechanism



5. Lastly, insert the mesh filter with the flat top facing down (as shown left) to complete the nozzle component assembly. It is now ready to replace into the machine.



6. Carefully line the mesh filter with its slot on the machine and slowly push the nozzle assembly up to reinsert the entire thing into the machine.



7. Carefully twist the white plastic valve lock in a clockwise motion to lock the nozzle onto the machine.



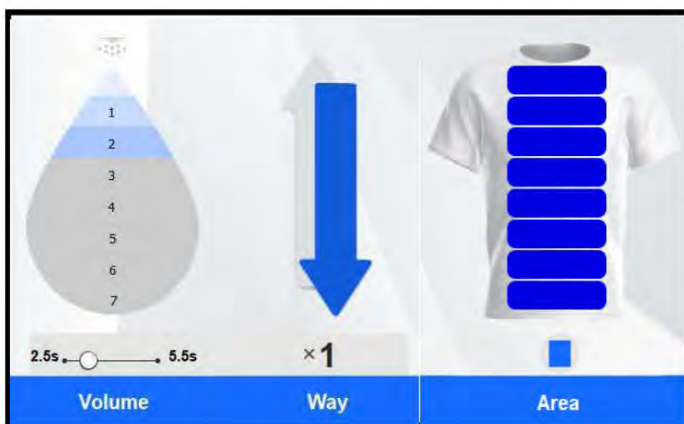
8. You've successfully replaced the nozzle and you may continue to use the Direct Treater Dual Pretreatment Machine.

# DIRECT TREATER DUAL

## Official Settings Guidelines

DISCLAIMER: These official settings guidelines have been established as starting points for pretreating specific garment types. Please note that all garment types, colors, brands and quality will vary in results so adjust by increasing or decreasing settings as needed until the desired result are achieved.

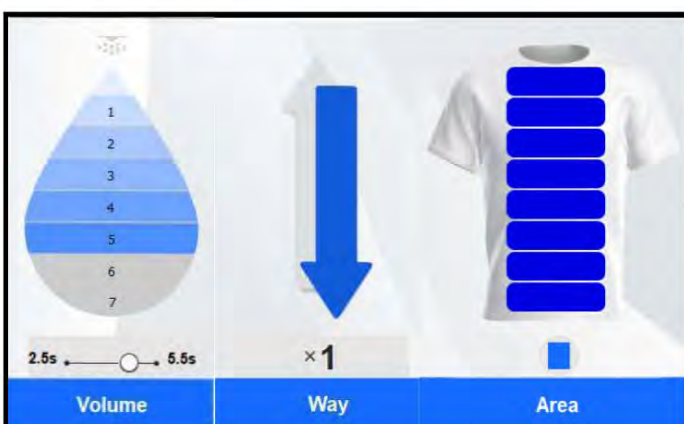
### White/Light Cotton Garments



### Black/Dark Cotton Garments



### White/Light Polyester Garments



### Black/Dark Polyester Garments

